

# CFPX-206 CRYSTALS

ISSUE 3; 1 NOVEMBER 2008 – RoHS 2002/95/EC

## Holder Style

- Ceramic package with a sealed glass lid & gold plated pads

## General Specification

- Load Capacitance (CL): 12.5pF standard (C)  
9pF available (B)
- Drive Level: 0.5mW max
- Ageing:  $\pm 3.0$ ppm max per year @25°C (1st year)
- Shunt Capacitance (C0): 1.0pF typ
- Static Capacitance (C1): 3.4fF typ

## Packaging

- Loose in bulk pack or tape and reel

## Standard Frequency Tolerance

- $\pm 20$ ppm @25°C

## Turnover Temperature

- 25°C  $\pm 5^\circ\text{C}$

## Operable Temperature Range

- -40 to 85°C

## Storage Temperature Range

- -55 to 125°C

## Environmental Specification

- Drop: 100g dummy, natural drop from 1500mm height onto concrete, three directions x 10 times:  $Df/fo = \pm 8$ ppm
- Vibration: 10Hz to 55Hz, 0.75mm amplitude, 55Hz to 500Hz acceleration 98m/s<sup>2</sup>, 10Hz to 500Hz to 10Hz, 5min/cycle, 6hrs (2hrs, 3 axes):  $Df/fo = \pm 3$ ppm

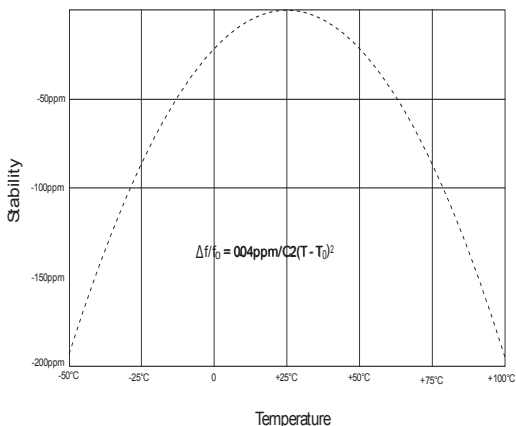
## Marking Includes

- Frequency + Holder + Circuit Condition

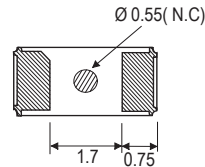
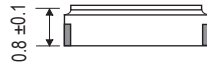
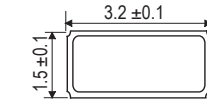
## Minimum Ordering Information Required

- Frequency + Model Number + Load

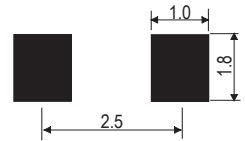
## Typical Frequency Stability Characteristic



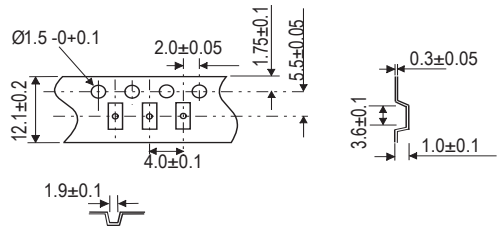
## Outline (mm)



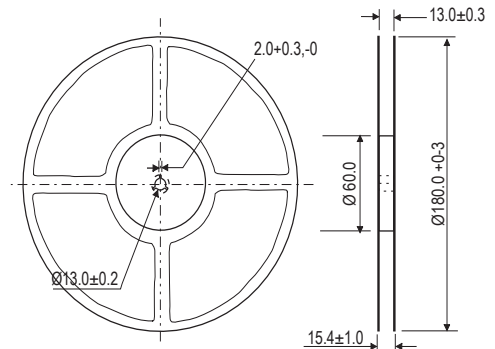
## Solder Pad Layout



## Tape (mm)



## Reel (mm)



**Electrical Specifications – maximum limiting values**

Frequency Range	Frequency Tolerance @25°C ±2°C	Operating Temperature Range	Typical Frequency Stability Coefficient	ESR	Vibration
32.768kHz	±20ppm	-40 to 85° C	-0.04ppm/°C <sup>2</sup>	70kΩ	Fundamental